

The Oklahoma Turnpike Authority invites you to a

# PUBLIC MEETING

for the Gilcrease Expressway  
I-44 North to Edison Street  
Tulsa County, Oklahoma

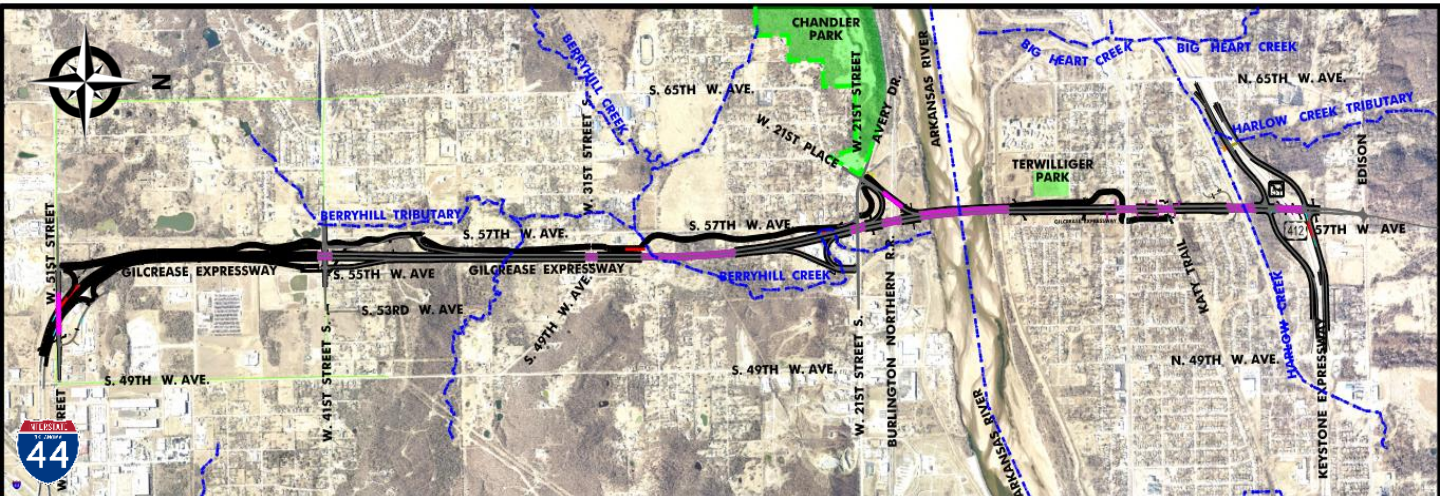


February 15, 2018 at 6:00 PM

Chandler Park Community Center Gym

6500 W. 21<sup>st</sup> Street, Tulsa, OK 74107

The purpose of this meeting is to inform the public and obtain input on the proposed Gilcrease Expressway extension from I-44 north to Edison Street in Tulsa, Oklahoma. The Gilcrease Expressway has been planned for many years and has been the subject of many studies. With project partners City of Tulsa, Tulsa County, the Oklahoma Department of Transportation, and the Indian Nations Council of Governments, the Oklahoma Turnpike Authority now plans to complete the engineering, property acquisition, and construction of the Gilcrease Expressway on an accelerated schedule.



The purpose of the project is to provide additional transportation choices for West Tulsa including a new Arkansas River crossing, improve regional mobility and connectivity, enhance economic opportunity, and relieve traffic and congestion on Tulsa's other highways. Topics to be presented at the meeting include:

- Need for the Project
- Project History
- Proposed Improvements
- Anticipated Impacts
- Next Steps

If you have any questions regarding the project or the meeting, please contact Gene Wyckoff, Poe & Associates, at (405) 949-1962 ext. 271, or [gene.wyckoff@poeandassociates.com](mailto:gene.wyckoff@poeandassociates.com), or Kirsten McCullough, Garver, at 918-250-5922 or [kjmccullough@garverusa.com](mailto:kjmccullough@garverusa.com). We hope to see you there!



SCALE: 1" = 5280'

EW-58

EW-59

EW-60

EW-61

EW-62

EW-63

EW-64

NS-395

NS-394

NS-393

NS-392

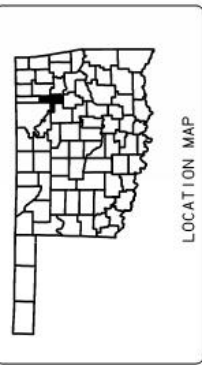
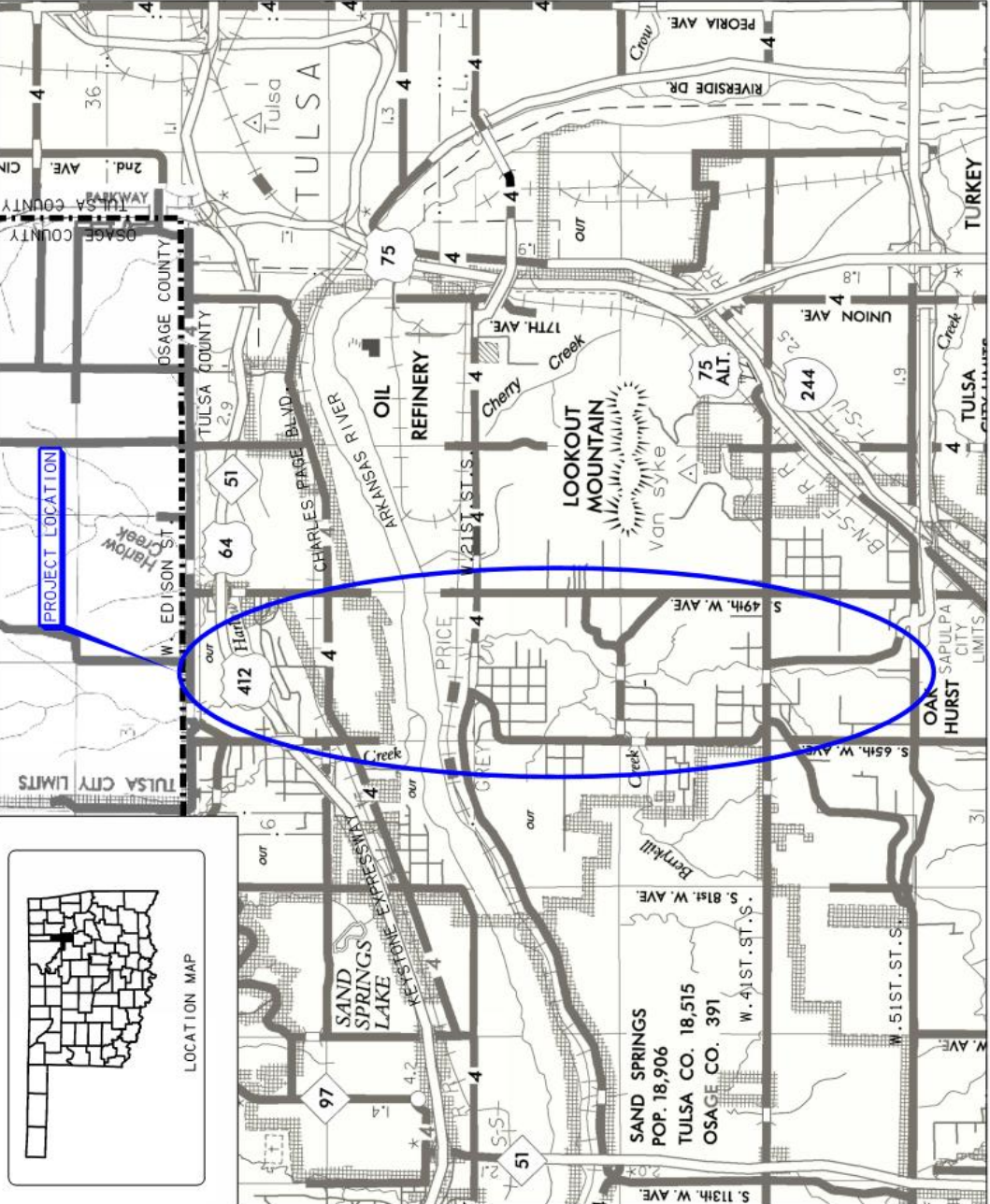
NS-391

NS-390

NS-389

NS-388

NS-387



TO OKLAHOMA CITY



OKLAHOMA TURNPIKE AUTHORITY  
PROJECT LOCATION MAP  
TULSA COUNTY

OKLAHOMA TURNPIKE AUTHORITY  
JP 31313(04) GILCREASE EXPRESSWAY